

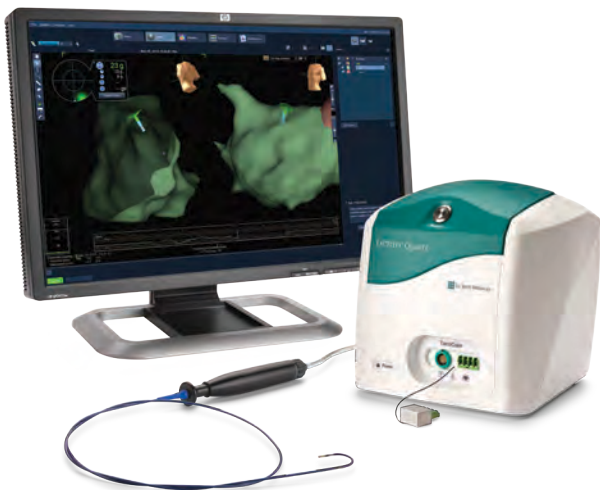
# TactiSys™ Quartz System

## Product Highlights

- Improved sampling rate for accurate contact force information
- No lengthy startup calibration procedure required
- Dedicated work screen with easy-to-read guiding icons and real-time contact force morphologies
- Proprietary lesion formation indices providing additional information to physicians
- Multiple user profiles for easy preference switching between EPs
- Open platform allows for use with varying EP configurations

## Ordering Information

Reorder Number	Description	Length (m)
PN-004 400	TactiSys™ Quartz System	
<del>PN-004 401</del>	<del>TactiSoft™ Software</del>	
<del>PN-004 450</del>	<del>Computer (PC Client)</del>	
<del>PN-004 411</del>	<del>TactiSys Quartz Monitor</del>	
<del>PN-004 511</del>	<del>TactiSys Quartz Mount</del>	
<del>PN-004 514</del>	<del>TactiSys Quartz Stockert RF Cable</del>	
PN-004 515	TactiSys Quartz St. Jude Medical RF Cable	
PN-001 427	TactiSys Quartz Analog Output Cable	
PN-004 486	TactiSys Quartz Equipotential Cable	
PN-004 516	TactiSys Quartz Ethernet Cable	10
PN-004 510	TactiSys Quartz Ethernet Cable	20
PN-004 487	TactiSys Quartz VGA Cable	20
<del>PN-004 517</del>	<del>TactiSys Quartz Power Cable EU</del>	
PN-004 518	TactiSys Quartz Power Cable UK	



Information contained herein for distribution outside of the U.S. only.

Electrophysiology International Catalogue - SJM-TCS-0814-0001

©2014 St. Jude Medical. All Rights Reserved.