

ViewMate™
Ultrasound Console



EXCEPTIONAL CARDIAC IMAGING IN A COMPACT CONSOLE



Image of a device crossing the septum into the Left Atrium (post-transeptal puncture). Image generated from the ViewFlex™ ICE catheter.

Visualize cardiac structures, blood flow and devices within the heart

Outstanding image quality provides clear visualization of cardiac anatomy and devices.¹

- Software-based architecture allows for rapid image optimization.
- Enhanced far-field resolution enables assessment of distal structures such as the left pulmonary veins, left atrial appendage and left ventricle.
- Low noise and decreased artifact provide clear views of anatomic landmarks and devices.¹

Gain workflow advantages with enhanced functionality¹

- Rapid boot-up reduces time to begin procedures.
- 1.5 hour battery pack eliminates the need to power down when moving the system.
- Software-based architecture allows for easy installation of clinically impactful upgrades.
- Networking compatibility with most hospital PACS servers.
- Ergonomically designed control panel to enable easy control and case annotation.





Streamline procedures single-handedly¹

The ViewFlex™ Xtra ICE catheter provides seamless maneuverability, allowing physicians to focus more on the procedure and less on catheter manipulation to enhance workflow efficiency.

- Ergonomic handle with auto-lock steering allows for single-handed operation, which can minimize catheter repositioning.
- Extended catheter reach on the distal curve assists in right ventricular access.
- Four-way tip deflection enables optimal viewing planes.
- Integrated connector streamlines setup by eliminating the need for a sterile sleeve.

Increased productivity with a fully featured system

The ViewMate™ ultrasound console features comprehensive imaging capabilities, which can eliminate the need for additional imaging equipment to be transported to the lab.¹

- Multi-transducer port connects three probes simultaneously, which allows for quick selection of transducer based on clinical need (ICE, Transthoracic, Transesophageal and Vascular).
- Choose multiple imaging modes (2-D, M-Mode, Pulsed Wave, Continuous Wave, Color Doppler, Tissue Doppler Imaging*).

*Not available with ICE

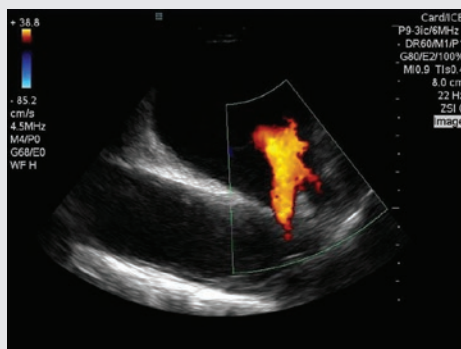


Image of the Left Pulmonary Veins (with blood flow from veins as denoted in orange) as viewed from the Right Atrium using the ViewFlex™ ICE catheter.

ViewMate™ Ultrasound Console Specifications

Feature	Specification
Dimensions	62 H x 20.1 W x 28.2 D (in) 157 H x 51 W x 72 D (cm)
Weight	147 lb (66 kg)
Display	19 in (48 cm) 1280 x 1024 Pixel Resolution Mounted on articulating arm
Architecture	> 100,000 dynamic channels per frame Frame rate: > 1,000 fps Boot time: < 30 seconds
Power	100-240 VAC, 50-60 Hz Cart Battery with 2 hour capacity

ViewFlex™ Xtra Catheter Specifications

Feature	Specification
Catheter size	9 F
Introducer size	10 F
Insertable length	90 cm
Tip deflection	Anterior/Posterior, Left/Right ± 120 degree flexion
Transducer type	64 element phased array
Viewing sector	80 degrees

1. St. Jude Medical. Data on file. Report 90008428 Rev B.

Abbott

One St. Jude Medical Dr., St. Paul, MN 55117 USA, Tel: 1 651 756 2000
SJM.com

St. Jude Medical is now Abbott.

Rx Only

Brief Summary: Prior to using these devices, please review the Instructions for Use for a complete listing of indications, contraindications, warnings, precautions, potential adverse events and directions for use.

™ Indicates a trademark of the Abbott group of companies.

‡ Indicates a third party trademark, which is property of its respective owner.

© 2018 Abbott. All Rights Reserved.

26329-SJM-VMT-0914-0003(4) | Item approved for global use/A4, except for Argentina.

